



Indiana University Health

Nurse-Family Partnership

A department of IU Health Bloomington Community Health serving Greene, Lawrence, Monroe, Orange and Owen counties.

2020 Annual Report



Indiana University Health

Table of Contents

Who We Are.....	3
Nurse Family Partnership at IU Health Bloomington.....	4
Referrals.....	5
Enrollment Demographics.....	6
NFP by the Numbers.....	7
NFP Compared to the State and National Averages.....	8
NFP in the Community.....	9
NFP Graduation.....	10
Parent Groups.....	11
A Special Thank You to Our Sponsor, United Way.....	12

Who We Are



The Nurse-Family Partnership (NFP) program is an evidence-based, nurse home visitation program that positively transforms the lives of vulnerable babies, mothers and families. It is a national program with 40 years of evidence to support its outcomes. NFP at IU Community Health in Bloomington serves low-income mothers with their first baby from early pregnancy through their child's second birthday. This is a free and voluntary program funded by the Indiana State Department of Health.

“There is a magic window during pregnancy... it’s a time when the desire to be a good mother and raise a healthy, happy child creates motivation to overcome incredible obstacles including poverty, instability or abuse with the help of a well-trained nurse.”

– David Olds, Ph.D., Founder

Our Mission

Nurse Family Partnership works to positively transform the lives of vulnerable babies, mothers and families.

Our Vision

A future where all children are healthy, families thrive, communities prosper, and the cycle of poverty is broken.

**SINCE BEING ESTABLISHED IN 2011,
NURSE FAMILY PARTNERSHIP IN INDIANA
HAS...**

- ➡ Served 4,784 Families**
- ➡ 4 Network Partners**
- ➡ Provided in 39 Counties**
- ➡ A 7.8 to 1 Benefit-Cost Ratio for Every Dollar Invested in NFP**

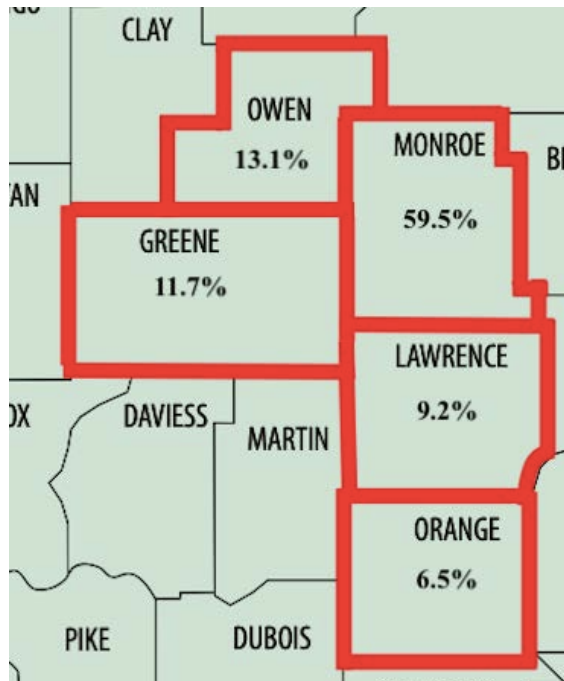


Nurse Family Partnership at IU Health Bloomington

Through our program, first-time parents-to-be are regularly visited by trained nurses, beginning early in pregnancy and continuing through the child's second birthday. The nurses provide invaluable knowledge, guidance, and support that promotes positive outcomes.

At IU Health Bloomington Community Health, we serve five counties located in Southern Indiana: Greene, Lawrence, Monroe, Orange, and Owen.

Enrollment by County



“Seeing the joy in our graduating toddlers, despite the challenges we observed in the 3 years of relationship with their parent, is rewarding.”

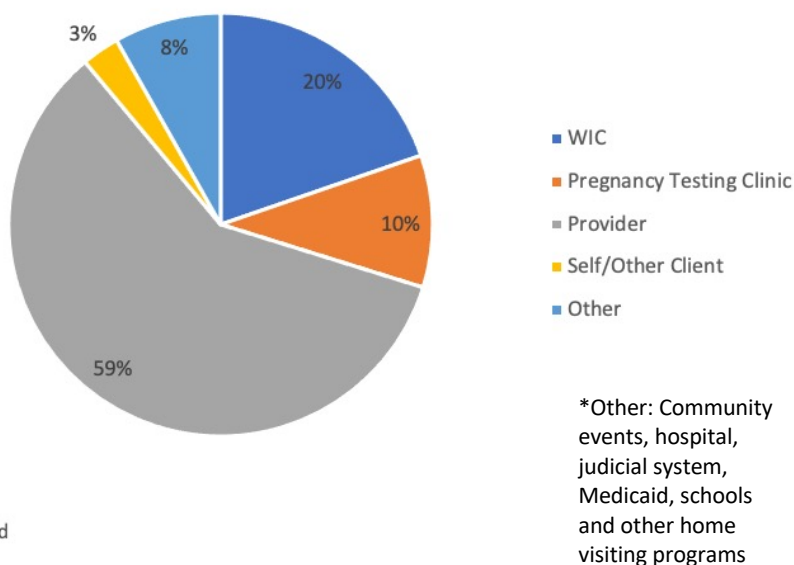
- NFP Nurse,
Kimberly Cramer

Pictured above is one of our 2020 graduates.

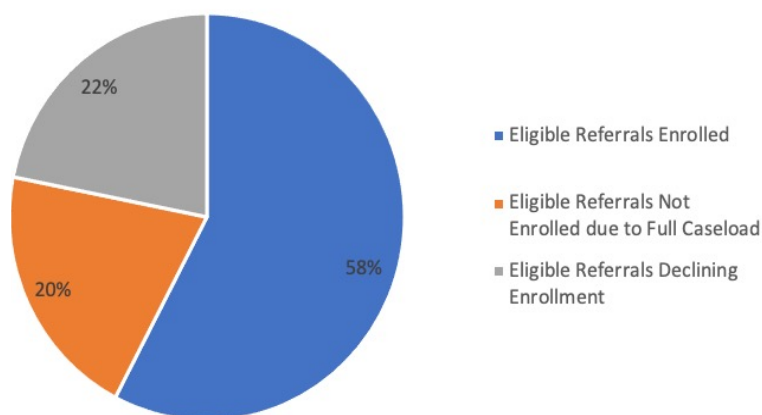
Referrals

As Nurse Family Partnership is ranked as the Gold Standard of home visiting programs, many services refer expecting parents to our program.

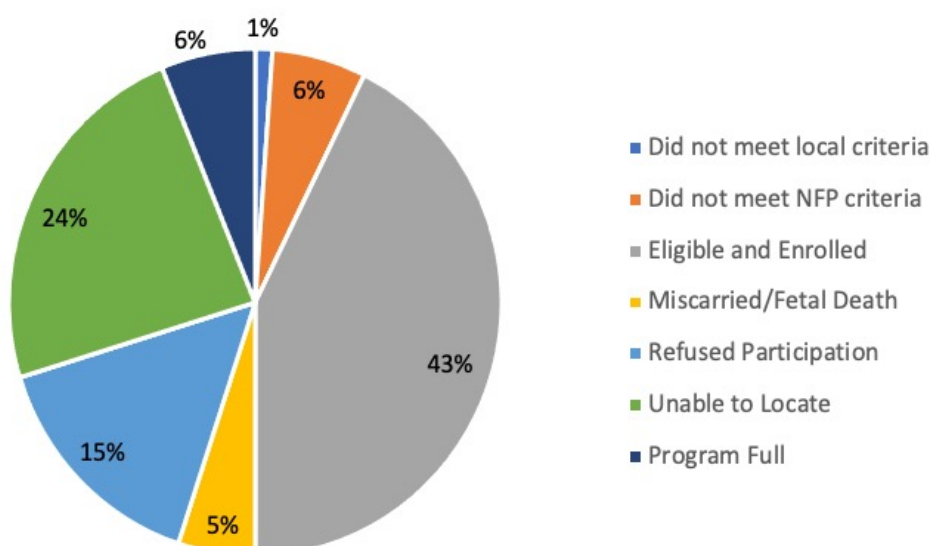
Referral Sources



Referral Eligibility



Eligible Referral Enrollment

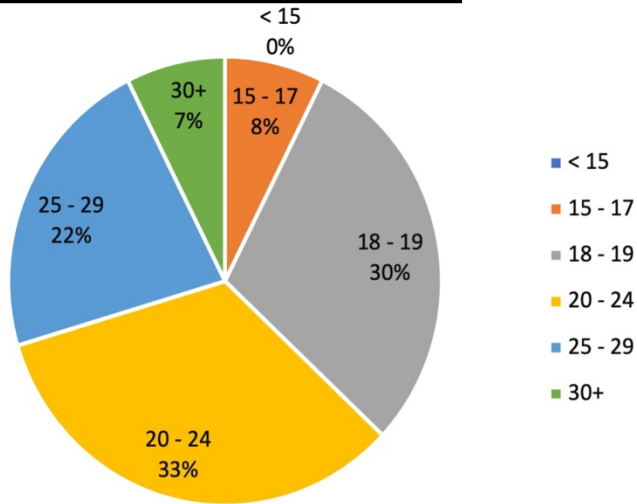


To be eligible, referrals must meet the following requirements:

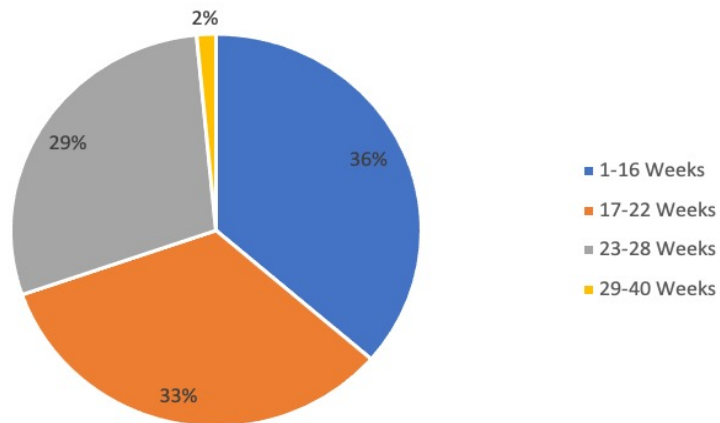
- First-time pregnancies with no history of live birth
- Pregnant for 28 weeks or less
- Low-income mothers (Medicaid, WIC, SNAP, TANF, eligible)

Enrollment Demographics

Client Age at Intake



Gestational Age at Intake



“Graduation visits have been full of many emotions. Mostly, we feel pride in seeing the small brave steps our parent has taken and the difference it will make in the life of the family.”

- NFP Nurse

Pictured to the left is another 2020 NFP graduate with one of our wonderful nurses, Isis.

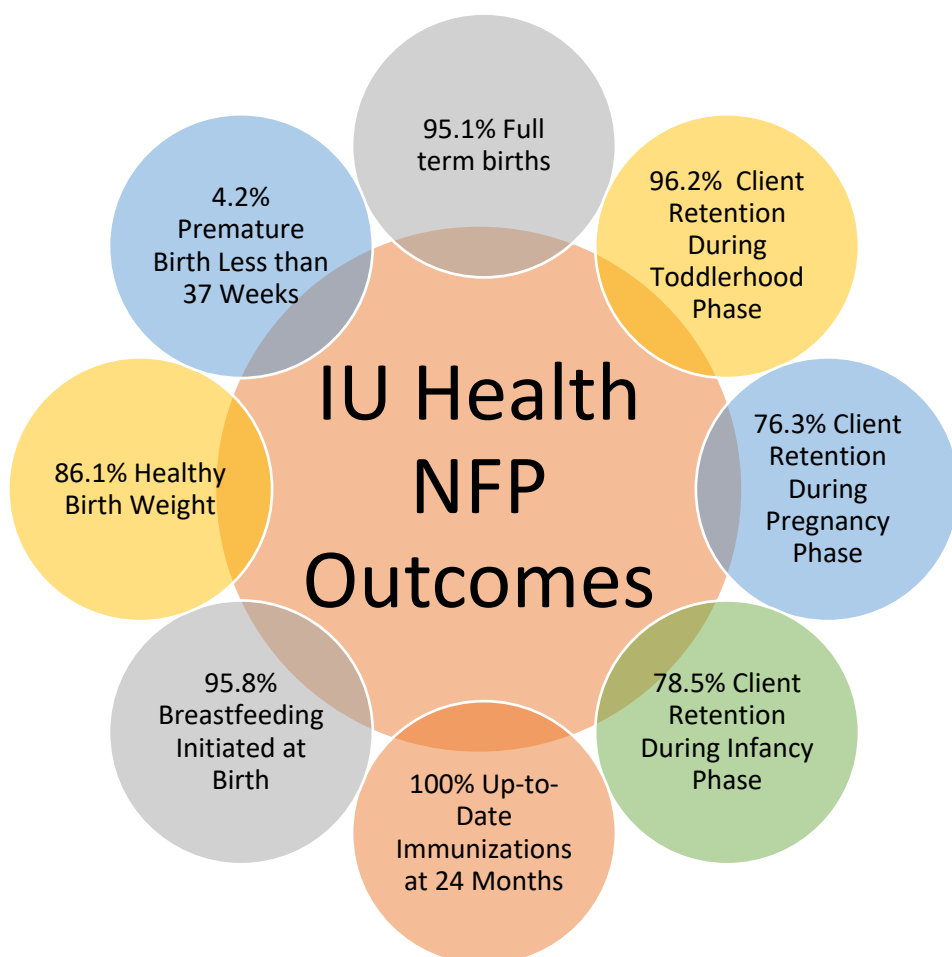
NFP by the Numbers



200 Clients Served

2379 Total Visits

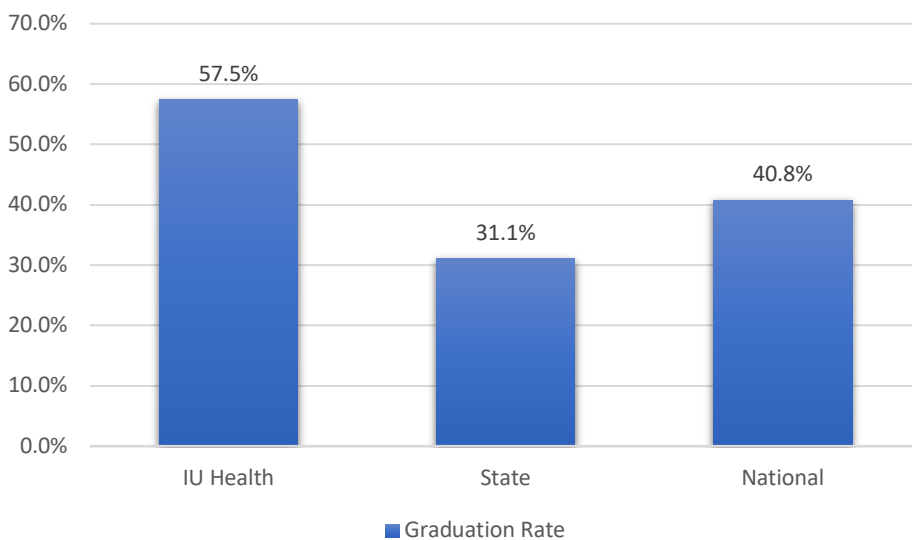
72 Total Births



NFP Compared to the State and National Averages



Graduation Rate



	IU Health	State	National
Client Retention During Pregnancy Phase	76.3%	71.6%	69.6%
Client Retention During Infancy Phase	78.5%	66.3%	65.8%
Client Retention During Toddlerhood Phase	96.2%	70.2%	80.7%
Premature Birth Less than 37 Weeks	4.2%	8.8%	11.0%
Client Initiated Breastfeeding at Birth	95.8%	89.1%	88.0%
Up-to-date Immunizations at 6 Months	96.4%	92.8%	92.6%
Up-to-date Immunizations at 12 Months	92.3%	93.9%	92.0%

NFP in the Community

Diaper Dash 2020

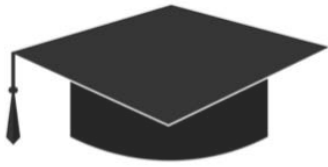
Beginning in 2018, IU Health NFP has hosted a 5k walk/run fundraiser, known as the Diaper Dash, to support clients. Last year, community members and senior leaders from IU Health came to support the event. However, due to the COVID-19 pandemic, our annual Diaper Dash had to be virtual. Participants were encouraged to take a selfie of themselves walking or write a positive message and post it Facebook to be entered into a drawing.



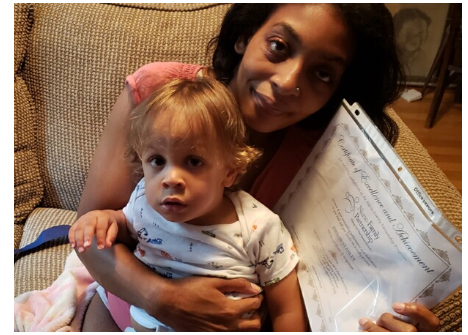
Thank You to Our Sponsors!

The event was sponsored by **IU Health, United Way, Local Council of Women, Greene County Hospital, Rural Opportunities Initiative, On Our Way Pre-K, Bloomington/Monroe Community Foundation, and Kiwanis**. All the money raised went to supporting the Nurse-Family Partnership clients with various needs throughout the year!





CLASS OF **NFP Graduation** 2020



2020 may have had its challenges, but Nurse Family Partnership at IU Health Community Health has a lot to celebrate. The program serves first time, low-income mothers from prenatal care until baby turns two years of age. The program currently serves families in Owen, Monroe, Lawrence, Orange, and Greene Counties. Starting in 2018, the program is proud to celebrate the first 27 graduates of the program this fall of 2020. With accomplishments such as high school graduation, college, new jobs, entrepreneurship, and more, these parents have done it all while raising their first child and navigating the challenges of a global pandemic.

Congratulations to all of our NFP parents. Your nurses could not be prouder of you!



Parent Groups



Beginning in 2019, NFP started a monthly parent group where the parents can gather for support and some fun! The group nights have allowed the new parents to connect with other parents while learning helpful tips. Although last year we were able to meet in person, we have had to switch to virtual parent groups to keep everyone safe during this pandemic.

Some of the group night themes included:

- Child Safety
- Essential Oils Education
- Holiday Crafts
- Cooking Tutorials
- Mental Health
- Self-Care

A Special Thank You to Our Sponsor, United Way

United Way has been a constant and strong support of NFP. They collaborated with community businesses and leaders to provide gift baskets to the NFP clients. These baskets include items such as welcome baby items, mother's self-care items, safety supplies, and educational gifts such as books. They always include a personal and handwritten note to the client. The baskets are greatly appreciated and loved by the moms.

